

## Information Supplement for AWG Fittings, LLC customers

### Semi-annual maintenance and testing of AWG Fittings relief valves.

This supplement provides additional information to customers using AWG Fittings, LLC relief valves. This supplement contains information regarding testing and setting of AWG pressure relief valves after multiple requests, following the reports of catastrophic failure of valves this past year.

The valves involved in these failures **were not** AWG Fittings, LLC products. These incidents do raise awareness about preventative maintenance and testing to ensure safe operation. AWG Fittings, LLC hopes its customers will use this information to be sure that their products maintain the high level of quality that they were manufactured with.

# 2.0 Safety and Cautions

## Safety words defined

### DANGER

Indicates an imminently hazardous situation which, if not avoided, will result in death or serious injury

### WARNING

Indicates a potentially hazardous situation which, if not avoided, could result in death or serious injury.

### CAUTION

Indicates a potentially hazardous situation which, if not avoided, may result in minor or moderate injury.

## Safety and Cautions

### DANGER

This equipment is to be used by trained firefighting personnel only. Failure to obtain proper training may result in severe injury or death.

### DANGER

Do not exceed maximum operating pressure. Exceeding the maximum rated pressure for this appliance may cause malfunction or failure resulting in severe injury or death.

### DANGER

Failure of fittings and hoses can result in injury. Use caution not to exceed hose pressures as stated in NFPA 1961 for the type of hose being used.

### DANGER

Make sure all connections are secure and complete. Failure to ensure proper connection may result in leaks or cause the devices to become disconnected under pressure, resulting in injury or death.

### DANGER

Open and close all valves slowly. Failure to operate valves slowly may cause water hammer, which may result in damage or failure of hose, coupling devices and appliances leading to injury or death.

### WARNING

Do not use if damaged. Damage to product may cause malfunction or failure. Remove from service until unit can be repaired.

### WARNING

Check for damage or worn coupling connections. Damage or worn connections may become disconnected under pressure. Remove from service to be repaired by an AWG certified repair facility.

### CAUTION

For use with fresh or salt water, with or without firefighting foam.

### WARNING

Altering of this device may reduce its operating effectiveness or safety. Do not alter or change in any way from its intended design.

## 5.0 Care and Maintenance

AWG Fittings, LLC recommends that the relief valve should be exercised every six months to keep the internal components clean and to make sure all parts are working properly.

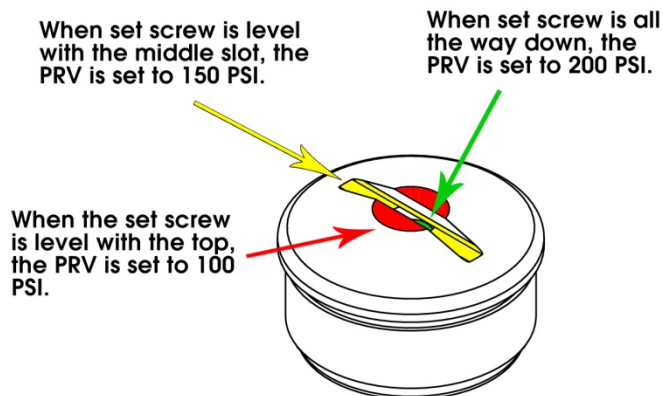
### **⚠ DANGER**

The relief valve has no field serviceable parts. Never try to repair this valve unless you are an AWG Fittings, LLC certified repair technician. Improper repair could result in serious injury and/or death.

### **⚠ WARNING**

All working parts are contained inside the body of the relief valve. The port opening on the relief valve body should be kept clear of dirt and debris.

**For the old style 200 PSI relief valve.**  
(rounded top of relief valve body)



Adjust the set screw to the lowest available setting, 100 PSI. Attach a water supply line to the appliance the valve is attached to and slowly fill the supply line with water and bleed off any trapped air. After bleeding off all trapped air, shut all discharge valves on the appliance.

### **⚠ WARNING**

Keep personnel clear of the valve and slowly increase the pressure to 100 PSI. Check for water flowing from the discharge.

### **⚠ WARNING**

If water is not flowing from the relief valve, slowly increase the pressure to 110 PSI. Check for water flow from the relief valve. The relief valve should open and discharge water from the PRV.

## 5.0 Care and Maintenance

Allow water to flow freely from the valve to remove dirt and debris.

**⚠ WARNING**

If no water is flowing from the relief valve, the relief valve will need service at an AWG Fittings, LLC facility.

If the relief valve operated properly at the low pressure setting, test again at the high pressure setting.

Adjust the set screw to the highest available setting, 200 PSI. Attach a water supply line to the appliance the valve is attached to and slowly fill the supply line with water and bleed off any trapped air. After bleeding off all trapped air, close all discharge valves on the appliance.

**⚠ WARNING**

Keep personnel clear of the valve and slowly increase the pressure to 200 PSI. Check for water flow from the relief valve.

**⚠ WARNING**

If water is not flowing from the relief valve, slowly increase the pressure to 210 PSI. Check for water flow from the relief valve. The relief valve should open and discharge water from the PRV.

Allow water to flow freely from the valve to remove dirt and debris.

**⚠ WARNING**

If no water is flowing from the relief valve, the relief valve will need service at an AWG Fittings, LLC facility.

**⚠ WARNING**

After exercising the relief valve, shut down the water supply. Reset the relief valve to the desired setting and test the setting to make sure it was reset correctly.

**⚠ WARNING**

If the relief valve fails to open when pressure rises above the set level the relief valve should be returned to AWG Fittings, LLC for service.

# 5.0 Care and Maintenance

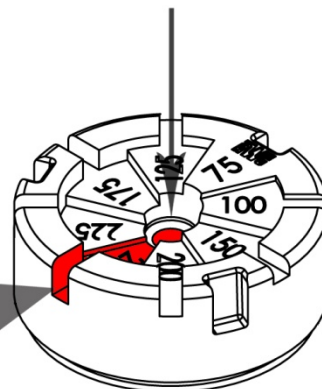
## For new style 250 PSI relief valve (multi-level steps)

**WARNING**

The slots on the side of the PRV allow you to place the allen wrench flat across the step to check that the set screw is level with the selected pressure step.

i.e.: PRV is set for 250 PSI.

Center setting screw.



**WARNING**

Adjust the set screw to the lowest available setting, 75 PSI. Attach a water supply line to the appliance the valve is attached to and slowly fill the supply line with water and bleed off any trapped air. After all trapped air has been removed, close all discharge valves.

**WARNING**

Keep personnel clear of the valve and slowly increase the pressure to 75 PSI. Check for water flow from the relief valve.

**WARNING**

If water is not flowing from the relief valve, slowly increase the pressure to 85 PSI. Check for water flow from the relief valve. The relief valve should open and discharge water from the PRV.

Allow water to flow freely from the valve to remove dirt and debris.

**WARNING**

If no water is flowing from the relief valve, the relief valve will need service at an AWG Fittings, LLC facility.

## 5.0 Care and Maintenance

**⚠ WARNING**

If the relief valve operated properly at the low pressure setting, test again at the high pressure setting.

**⚠ WARNING**

Adjust the set screw to the highest available setting, 250 PSI. Attach a water supply line to the appliance the valve is attached to and slowly fill the supply line with water and bleed off any trapped air. After all trapped air has been removed, close all discharge valves.

**⚠ DANGER**

Keep personnel clear of the valve and slowly increase the pressure to 250 PSI. Check for water flow from the relief valve.

**⚠ WARNING**

If water is not flowing from the relief valve, slowly increase the pressure to 260 PSI. Check for water flow from the relief valve. The relief valve should open and discharge water from the PRV.

Allow water to flow freely from the valve to remove dirt and debris.

**⚠ WARNING**

If no water is flowing from the relief valve, the relief valve will need service at an AWG Fittings, LLC facility.

**⚠ WARNING**

After exercising the relief valve, shut down the water supply. Reset the relief valve to the desired setting and test the setting to make sure it was reset correctly.

**⚠ WARNING**

If the relief valve fails to open when pressure rises above the set level the relief valve should be returned to AWG Fittings, LLC for service.

## 5.0 Care and Maintenance

**⚠ WARNING**

In the case of either style relief valve, if the relief valve operates and water flows from the discharge significantly sooner than what the pressure is set for, remove the appliance from service until repairs can be made.

**⚠ DANGER**

Discharging pressure below the valves set pressure can cause insufficient flow rates to hose lines beyond the appliance and reduce the safety and effectiveness of firefighting personnel, causing injury or death.

**⚠ DANGER**

Failure to discharge pressures above the valves set pressure can cause increased water flow and pressure beyond the relief valve and cause appliances and hose lines to fail, leading to injury or death of firefighting personnel and by-standers.